



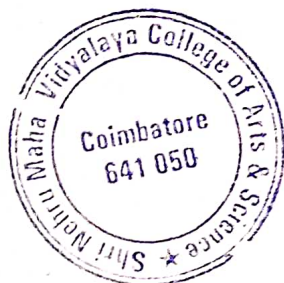
SHRI NEHRU MAHA VIDYALAYA COLLEGE OF ARTS AND SCIENCE (SNMV)

(Affiliated to Bharathiar University, Coimbatore, Re-accredited with "A" Grade by NAAC)
Shri Gambhirmal Bafna Nagar, Malumachampatti, Coimbatore - 641 050. Tamil Nadu, India.



Internal Quality Assurance Cell (IQAC)

POLICY DOCUMENT FOR DISABLED FRIENDLY BARRIER FREE ENVIRONMENT



PRINCIPAL
SHRI NEHRU MAHA VIDYALAYA
COLLEGE OF ARTS & SCIENCE
SHRI GAMBHIRMAL BAFNA NAGAR,
MALUMACHAMPATTI, COIMBATORE - 641 050.

Policy for persons with Disabilities

Objectives of the Policy

1.Students with disabilities are the most vulnerable group and need special attention. The Government would strive to: -

- Ensure right to care, protection and security for children with disabilities;
- Ensure the right to development with dignity and equality creating an enabling environment where Students can exercise their rights, enjoy equal opportunities and full participation in accordance with various status.
- Ensure inclusion and effective access to education, health, vocational training along with specialized rehabilitation services to Students with disabilities.
- Ensure the right to development as well as recognition of special needs and of care, and protection of Students with severe disabilities.

2.Barrier-free environment enables people with disabilities to move about safely and freely, and use the facilities within the built environment. The goal of barrier free design is to provide an environment that supports the independent functioning of individuals so that they can participate without assistance, in every day activities.

3.To create Inclusive Culture to avoid discrimination, exploitation and exclusion of Disable Students and Staff from all spheres of work and education.

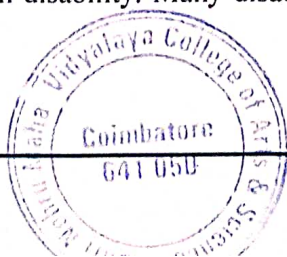
4. To ensure implementation of all legislations with respect to persons with disabilities.

5.To ensure full participation of persons with disabilities and to provide them the equal opportunities for development.

6. To provide necessary budget allocation to achieve above objectives.

The terms used in the policy have meaning mentioned in chapter I of the rights of the persons with disability Act 2016.

• Disability is a term that includes motor and sensory limitations (e.g., mobility, vision, or hearing impairments). It also includes disabilities resulting from chronic illnesses and syndrome, invisible disabilities, such as psychological and emotional disorders, learning disabilities, heart disease, diabetes, asthma, arthritis, epilepsy, Acquired Brain Injuries (ABI), and Acquired Immune Deficiency Syndrome (AIDS) are also included in the term disability. Many disabilities vary in degree and type of limitation;



therefore, accommodations must also vary and should be tailored to the needs of the individual.

The major functions with disabilities include:

- To address all disability related issues in the College.
 - To ensure overall accessibility for people with disability in the entire College system including departments.
 - To guide activities of the enabling units or resource center by providing expert suggestions.
 - To determine major grievances pertaining to any matter of persons with disabilities. If it is not resolved, it should be sent to the dignitaries.
-
- Providing counselling for the students with disabilities on the types of courses they can study at the higher education.
 - Ensuring the admission of as many students with disabilities as possible through the open quota.
 - Collection of orders dealing with fee concessions, examination procedures, reservation policies, etc., referring to persons with disabilities as per the government policies from time to time.
 - Assessing the educational needs of persons with disabilities enrolled in the higher education.
 - Conducting awareness programs for teachers about the approaches to teaching, evaluation procedures, etc, which they should adapt in the case of students with disability.
 - Providing support to the students with disability and assist them in getting appropriate employment after their studies.
 - Conducting regular Remedial Coaching Classes for persons with disabilities.
 - Accessibility policy: Providing access means making all the services, activities and the benefits thereof, fully available to qualified people with disabilities. The College should provide various provisions in creating a disabled friendly campus. The management and faculty members should ensure appropriate/reasonable accommodations for each person with a disability, and be willing to resolve access problems. The campus should be barrier free and accessible for persons with differently able.

The following principles of accessibility will be strictly observed:

- All UG and PG programs and activities must be accessible.
- To provide accessible textbooks and study material to all students with disabilities.
- To ensure the awareness programmes for all the teachers and non-teaching staff regarding the

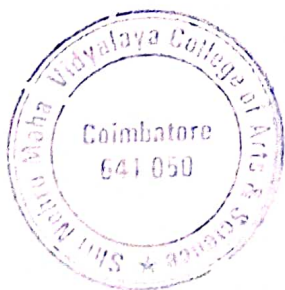


issues of accessibility.

The College will ensure the representation of all the types of disabilities listed in Rights of Persons with Disabilities 2016 and as per government regulations from time to time.

Exam policy: SNMV will make reasonable changes in the educational plan and assessment framework to meet the particular needs of students with disabilities. Sensible convenience will be made to meet the necessities of the considerable number of Students with disabilities. The guidelines and regulations has been issued by the examination department for use scribe in exams.

- Providing counselling for the students with disabilities on the types of courses they can study at the higher education.
- Ensuring the admission of as many students with disabilities as possible through the open quota.
- Collection of orders dealing with fee concessions, examination procedures, reservation policies, etc., referring to persons with disabilities as per the government policies from time to time.
- Assessing the educational needs of persons with disabilities enrolled in the higher education.
- Conducting awareness programs for teachers about the approaches to teaching, evaluation procedures, etc, which they should adapt in the case of students with disability.
- Providing support to the students with disability and assist them in getting appropriate employment after their studies.
- Facilities are provided time to time as per government rules.
- Disability sensitization sessions are part of the students and Employee induction programme.
- Staff are trained to assist persons with disabilities, including persons with learning disabilities.



PRINCIPAL
SHRI NEHRU MAHA VIDYALAYA
COLLEGE OF ARTS & SCIENCE
SHRI GAMBHIRMAL BAFNA NAGAR,
MAHARAJANPATTI COIMBATORE - 641 050.


Disabled-friendly and Barrier free Environment

An inclined plane that is placed in place of or in addition to steps is called a wheelchair ramp. Ramps make it easier for those using wheelchairs, as well as those pulling strollers, carts, or other wheeled things, to enter a building or move between spaces of various heights.

Ramps






 **GPS Map Camera**



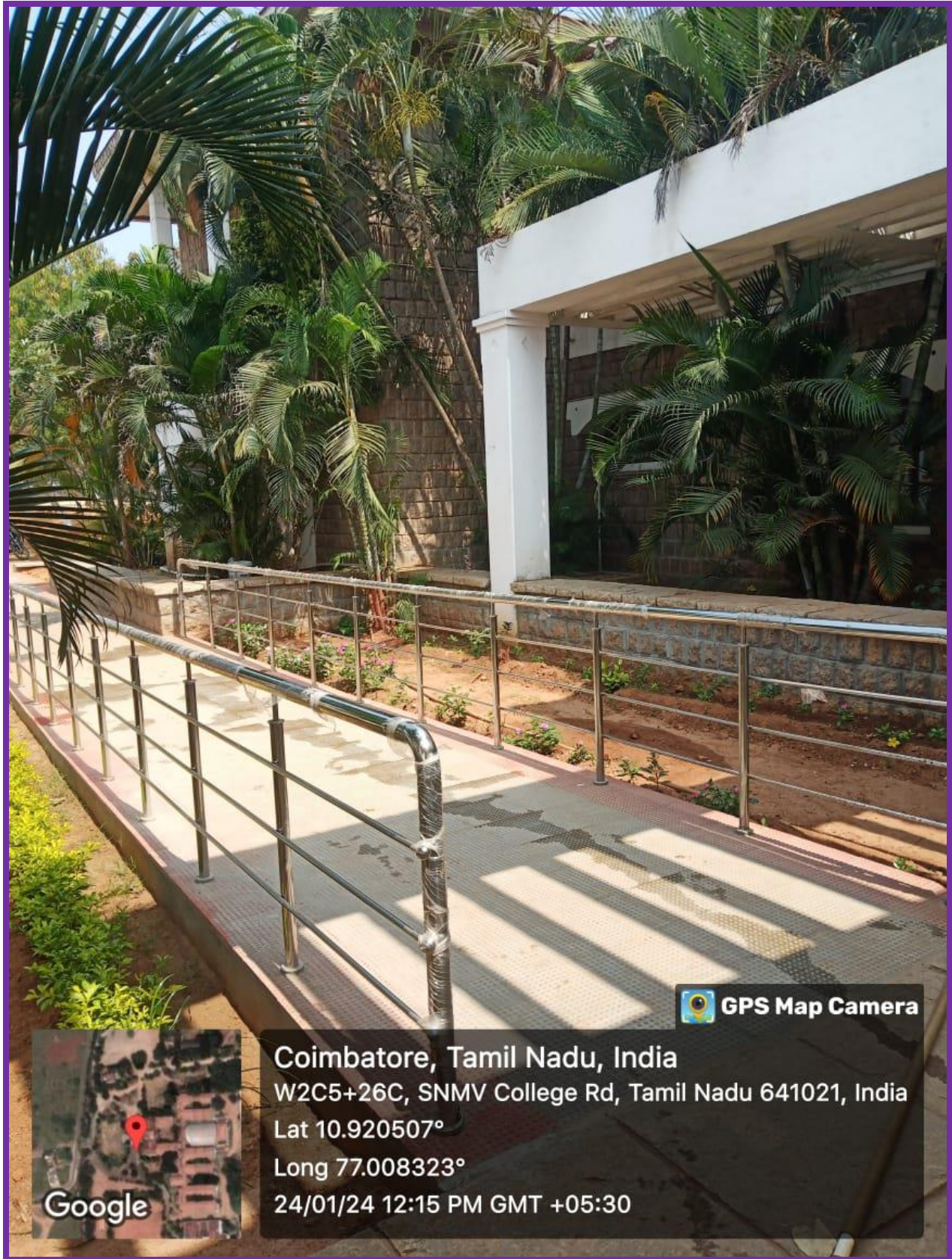
Coimbatore, Tamil Nadu, India
W2C5+26C, SNMV College Rd, Tamil Nadu 641021, India
Lat 10.92053°
Long 77.008308°
24/01/24 12:16 PM GMT +05:30




 **GPS Map Camera**



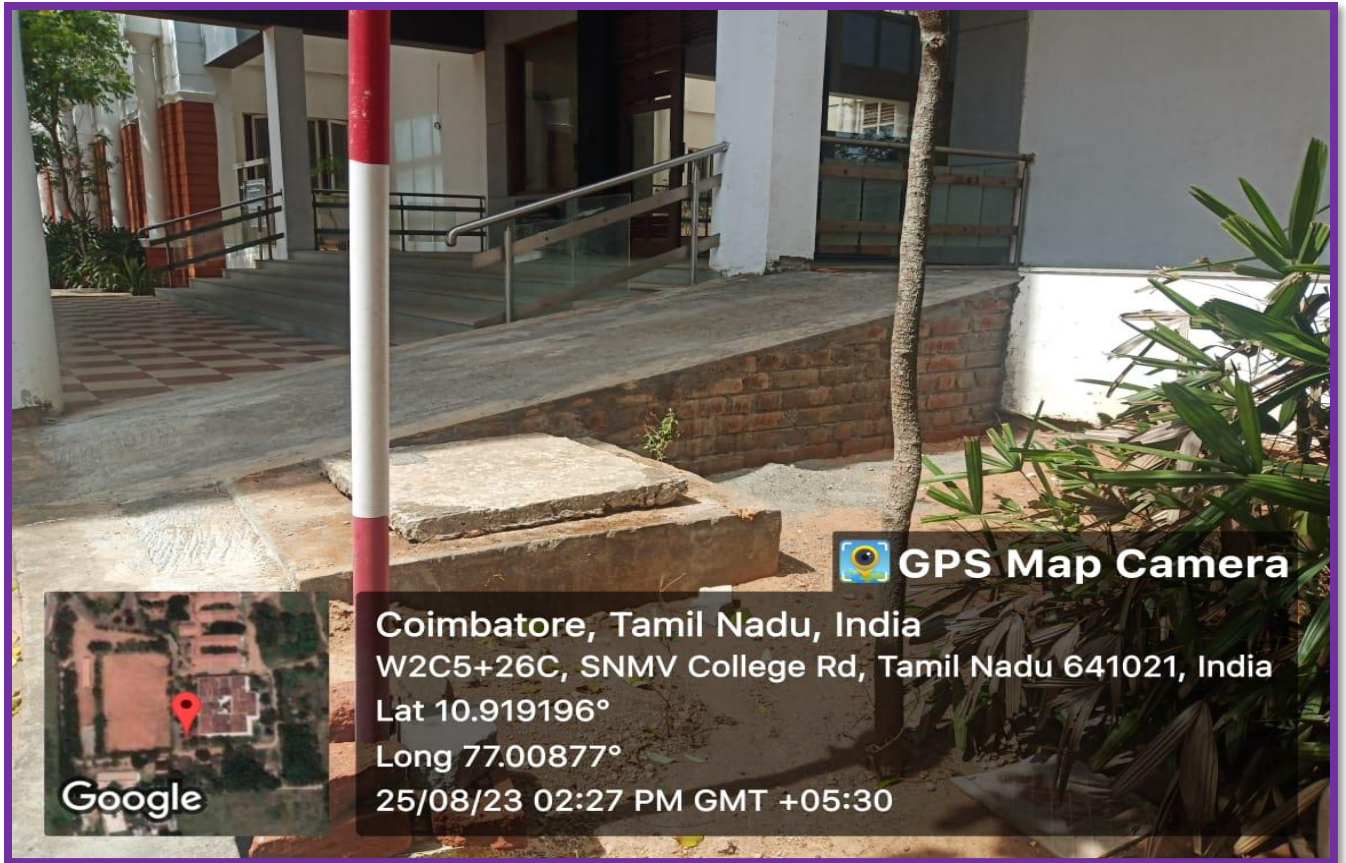
Coimbatore, Tamil Nadu, India
W2C5+26C, SNMV College Rd, Tamil Nadu 641021, India
Lat 10.920519°
Long 77.00831°
24/01/24 12:15 PM GMT +05:30



 **GPS Map Camera**



Coimbatore, Tamil Nadu, India
W2C5+26C, SNMV College Rd, Tamil Nadu 641021, India
Lat 10.920507°
Long 77.008323°
24/01/24 12:15 PM GMT +05:30





Wheel Chair

For persons who are unable to walk or have trouble walking, wheelchairs offer independence, mobility, and postural support. This enables them to move around, take part in daily activities, and live their lives as they want.



Disabled friendly wash room





GPS Map Camera



Google

Coimbatore, Tamil Nadu, India

W2C5+F62, Coimbatore, Tamil Nadu 641021, India

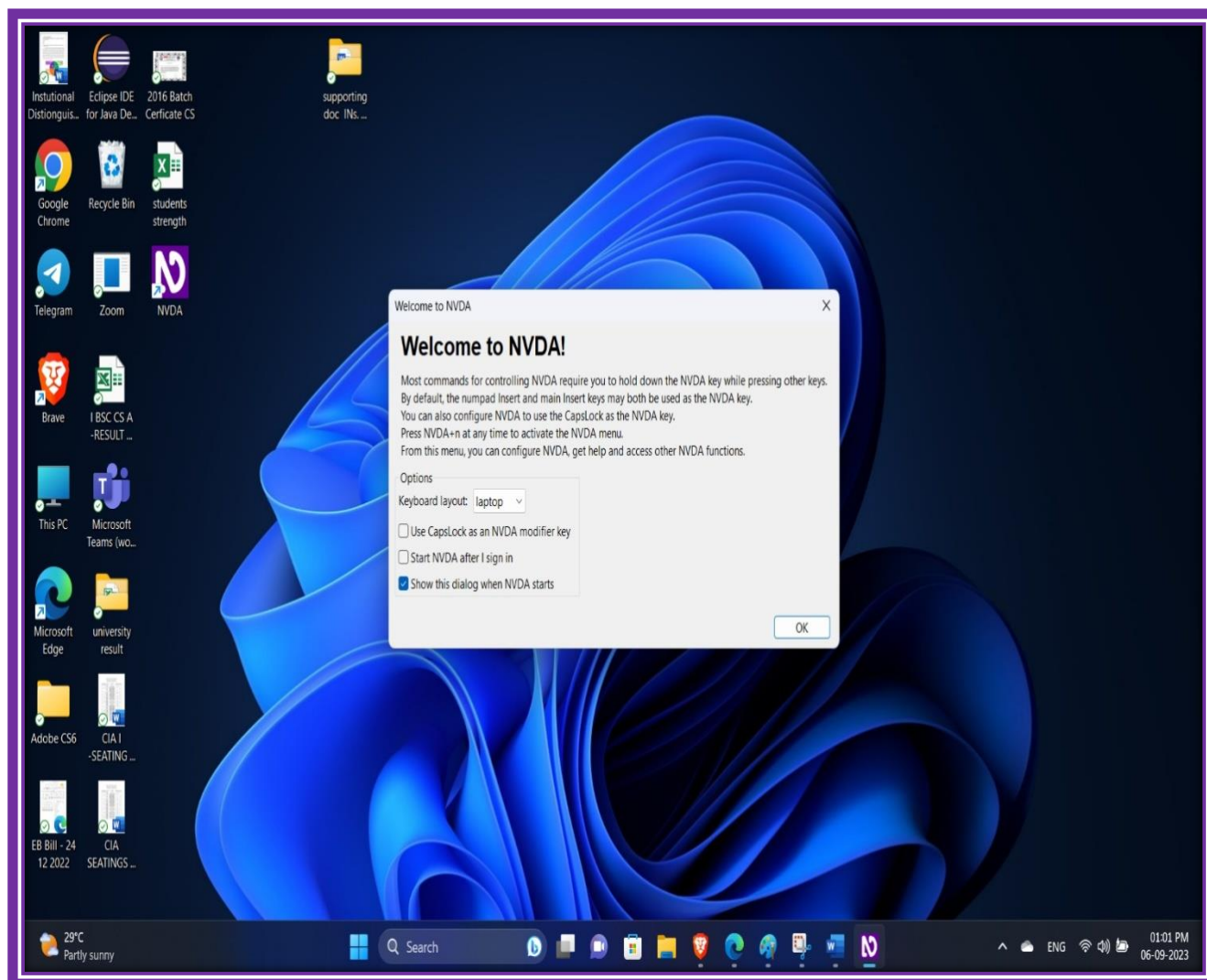
Lat 10.920595°

Long 77.008373°

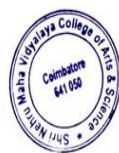
24/01/24 12:21 PM GMT +05:30



SOFTWARE FOR DISABILITY PERSONS



Scribe



PRINCIPAL
SHRI NEHRU MAHA VIDYALAYA
COLLEGE OF ARTS & SCIENCE
SHRI GAMBHIRMAL BAFNA NAGAR
MALUMACHAMPATTI, COIMBATORE – 641 050