



SHRI NEHRU MAHA VIDYALAYA COLLEGE OF ARTS AND SCIENCE (SNMV)

(Affiliated to Bharathiar University, Coimbatore, Re-accredited with "A+" Grade by NAAC)
Shri Gambhirmal Bafna Nagar, Malumachampatti, Coimbatore - 641 050. Tamil Nadu, India.



STRATEGY DEVELOPMENT AND DEPLOYMENT

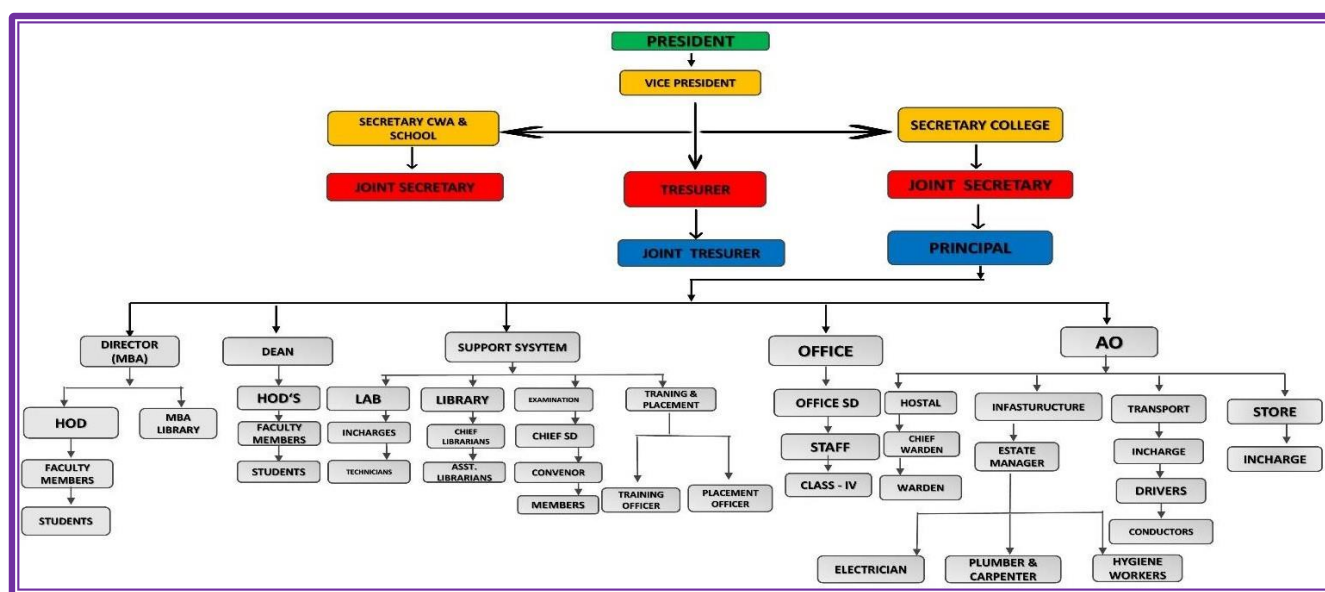
The functioning of the institutional bodies is effective and efficient as visible from policies, administrative setup, appointment and service rules, procedures, deployment of institutional Strategic/ perspective/development plan etc.

RESPONSE

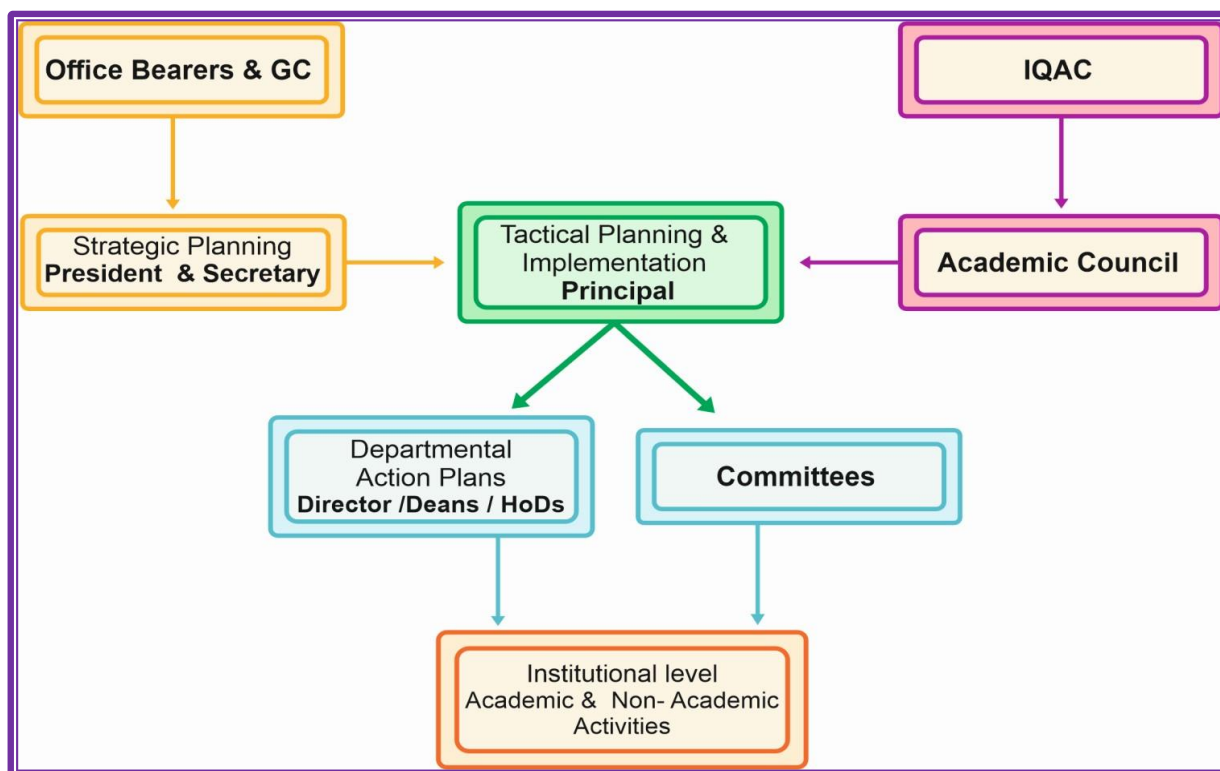
The College Committee (President, Vice-president, Secretary, Joint Secretary, Treasure) takes care of matters of policy and governance. Based on the directions received from the principal, in consultation with the Secretary of the college, Principal manages the day-to-day affairs. The admissions are done to the eligible candidates as per the norms/rules amended by the Government/UGC/University time to time.

The office administration is computerized to deal with the accounts, students' requirements, communication, scholarship, and other related activities. The Deans, Department Heads, the Director IQAC, coordinate IQAC, coordinate while the teachers and convenors of facilitative structures viz Committees/Cells/Clubs/Associations perform curricular as well as co-curricular and extracurricular activities.

Decision-making powers are delegated to various levels in the organizational hierarchy to foster decentralization. Frequent meetings are held at all levels to ensure a seamless and hierarchical process evolved with SOPs. The roles and responsibilities of various bodies are well defined in order to ensure accountability



STRATEGY DEVELOPMENT AND DEPLOYMENT



STRATEGIC DEVELOPMENT AND DEPLOYMENT

Strategic development and deployment happen in a procedural manner. The Strategic plan is formulated and executed by the top management of the institution (President & Secretary) and other office bearers and GC Council members.

Strategic Plan is executed at the tactical level by the head of the institution (Principal). Academic related decision and IQAC procedure is carried out by the principal. The Head of the institute constitutes the Committee to carry out various academic and non-academic related activity.

Department Level works are carried out by the Director/Deans /HODs. As per the direction received from the head of the department work is allotted & shared among the faculty.




PRINCIPAL
SHRI NEHRU MAHA VIDYALAYA
COLLEGE OF ARTS & SCIENCE
SHRIGAMBHIRMAL BAFNA NAGAR
MALUMACHAMPATTI, COIMBATORE - 641 050